

Capsule Gauges for Low Pressure

Crimped-on ring case stainless steel

KPChg 63
KPChgG 63

Standard Versions

Information on general and metrological features (e.g. load limits/temperature resistance) and standard pressure ranges/scale divisions can be found in model overview 6000.

Accuracy (DIN EN 837-3)

Class 1.6

Case

With polished crimped-on ring, stainless steel 304 (1.4301)

Degree of Protection (DIN EN 60 529/IEC 529)

IP44 for model KPChg with bottom connection

IP65 for model KPChgG

Case Ventilation

Model KPChgG case ventilation closable
ventilation required for internal pressure compensation

Case Filling

Model KPChgG glycerin

Nominal Case Size

63 mm (2 1/2")

Wetted Parts

| | | |
|----------|-------------------|-------------------------------|
| Type – 1 | connection | brass |
| | diaphragm capsule | CuBe alloy |
| | O-ring sealing | NBR |
| Type – 3 | connection | stainless steel 316L (1.4404) |
| | diaphragm capsule | stainless steel 316L (1.4404) |
| | O-ring sealing | FPM |

Case Configuration

| | |
|----------------------------|---|
| Connection | screwed |
| Position of the connection | - bottom connection - centre back connection (rm) |
| Mounting device | - without - back flange for surface mounting (Rh) - front flange for panel mounting (Fr) - u-clamp for panel mounting (BFr) |

Pressure Ranges (DIN EN 837-3)

| | |
|--------------|---|
| Model KPChg | 0 – 25 mbar to 0 – 600 mbar (0 – 10 inH ₂ O to 0 – 250 inH ₂ O) |
| Model KPChgG | 0 – 100 mbar to 0 – 600 mbar (0 – 40 inH ₂ O to 0 – 250 inH ₂ O) |

Process Connection

G 1/4 B (1/4" BSP)

Window

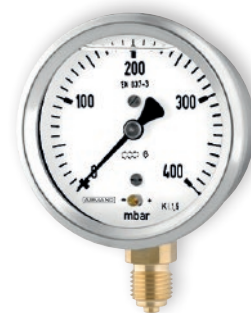
Polycarbonate (with punched hole for zero adjustment)

Movement

| | |
|---------------------|--------------|
| Brass/German silver | for type – 1 |
| Stainless steel | for type – 3 |

Dial

Aluminum white, scale black



Pointer

Aluminum black

Zero Adjustment

On the front side

Ordering Information, Standard Pressure Ranges, Options

See pages 3 and 4

Further Options

- Position of connection radial at 3 o'clock, 9 o'clock, 12 o'clock or position of connection other than vertical installation (90°) for models without case filling
- GOST version for Russia and Kazakhstan

Special Versions Upon Request

- Other process connections
- Other pressure ranges and/or special scales, e.g. dual scale mbar/kPa, coloured fields or ranges, dial inscriptions, negative scale
- Case parts 316L (1.4404)
- Increased degree of protection, e.g. IP65
- Wetted parts free of grease and oil for type – 3
- Oxygen version for type – 3 (without case filling)
- Version for higher medium temperatures
- Other position of connection

Accessories

See catalogue heading 11

www.armano-messtechnik.com

ARMANO

ARMANO Messtechnik GmbH

Location Beierfeld

Am Gewerbepark 9 • 08344 Grünhain-Beierfeld
Tel.: +49 3774 58 – 0 • Fax: +49 3774 58 – 545
mail@armano-beierfeld.com

Location Wesel

Manometerstraße 5 • 46487 Wesel-Ginderich
Tel.: +49 2803 9130 – 0 • Fax: +49 2803 1035
mail@armano-wesel.com

6212

03/22

Case Configurations, Code Letters, Dimensional Data and Weight, Case Ventilation

| Bottom Connection | Centre Back Connection |
|-------------------------|------------------------|
| without mounting device | |
| without code letters | code letters rm |
| | |

| with back flange for surface mounting | |
|---------------------------------------|--|
| code letters Rh | code letters rmRh |
| | <p>(available upon request, but not recommended according to DIN EN 837-3)</p> |

| with front flange for panel mounting |
|---|
| code letters rmFr |
| <p>recommended panel cut out Ø 67 ± 0.3 mm (2.64 ± 0.01")</p> |

| with u-clamp for panel mounting |
|---|
| code letters rmBFr |
| <p>recommended panel cut out Ø 64 ± 0.3 mm (2.52 ± 0.01")</p> |

| Dimensional Data (mm/inch) and Weight (kg/lb) | | | | | | | | | | | | | | | | | | | |
|---|---------------------------------|------------|------------|------------|------------|------------|------------|----------|-----------|------------|------------|------------|------------|------------|------------|------------|-------------|-----------------|--------|
| | NCS | a | a1 | b | b1 | b2 | b3 | c | c1 | c2 | c3 | D | D1 | D2 | d1 | d2 | d3 | G | G1 |
| 63 | KPChg | 10 0.39 | 13 0.51 | 40 1.57 | 39 1.54 | 43 1.69 | 42 1.65 | 5 0.2 | 2 0.08 | 13 0.51 | 13 0.51 | 67 2.64 | 62 2.44 | 64 2.52 | 75 2.95 | 85 3.35 | 3.6 0.14 | G ¼B M12x1.5 | ¼" NPT |
| 63 | KPChgG | 10 0.39 | 13 0.51 | 49 1.93 | 39 1.54 | 43 1.69 | 52 2.05 | 5 0.2 | 2 0.08 | 13 0.51 | 13 0.51 | 67 2.64 | 62 2.44 | 64 2.52 | 75 2.95 | 85 3.35 | 3.6 0.14 | G ¼B M12x1.5 | ¼" NPT |
| 63 | 10-fold üs KPChg / KPChgG | 10 0.39 | 13 0.51 | 49 1.93 | 49 1.93 | 43 1.69 | 52 2.05 | 5 0.2 | 2 0.08 | 13 0.51 | 13 0.51 | 67 2.64 | 62 2.44 | 64 2.52 | 75 2.95 | 85 3.35 | 3.6 0.14 | G ¼B M12x1.5 | ¼" NPT |

| g | g1 | h ^{±1} | h1 ^{±1} | s | s1 | s3 | s4 | SW | approx. weight ¹⁾ |
|------------|------------|-----------------|------------------|----------|-----------|--------------|-------------|------------|------------------------------|
| 62 2.44 | 62 2.44 | 54 2.13 | 54 2.13 | 5 0.2 | 1 0.04 | 10.5 0.41 | 9.5 0.37 | 14 0.55 | 0.18 0.4 |
| 62 2.44 | 62 2.44 | 54 2.13 | 54 2.13 | 5 0.2 | 1 0.04 | 10.5 0.41 | 9.5 0.37 | 14 0.55 | 0.33 0.73 |
| 72 2.83 | 72 2.83 | 54 2.13 | 54 2.13 | 5 0.2 | 1 0.04 | 10.5 0.41 | 9.5 0.37 | 14 0.55 | 0.18 / 0.33 0.4 / 0.73 |

| Case Ventilation | |
|---|--|
| Model KPChgG case ventilation no. 26 (reclosable, IP65) | |

¹⁾ data for versions without mounting device

Ordering Information

| Basic Model | | Capsule Gauge for Low Pressure with Crimped-on Ring Case | | | | KPChg | |
|----------------------------------|----------------------------|--|----------|--------------------|----------------------|----------------------|-------------------------|
| Case filling | without | | | | | without code letters | |
| | glycerin | | | | | G | |
| Nominal case size | case Ø 63 mm (2½") | | | | 63 | | |
| Wetted material | copper alloy | | | | - 1 | | |
| | stainless steel | | | | - 3 | | |
| Case configuration | case/connection | screwed | | | without code letters | | |
| | position of the connection | bottom connection | | | without code letters | | |
| | | centre back connection | | | rm | | |
| | mounting device | without | | | | without code letters | |
| back flange for surface mounting | | | | Rh | | | |
| front flange for panel mounting | | | | Fr | | | |
| u-clamp for panel mounting | | | | BFr | | | |
| Pressure ranges | mbar | | | inH ₂ O | | | |
| | vacuum | compound | pressure | vacuum | compound | pressure | |
| | -25 / 0 | -10 / +15 | 0 – 25 | -10 / 0 | -4 / +6 | 0 – 10 | |
| | | -15 / +10 | | | -6 / +4 | | |
| | -40 / 0 | -15 / +25 | 0 – 40 | -16 / 0 | -6 / +10 | 0 – 16 | |
| | | -25 / +15 | | | -10 / +6 | | |
| | -60 / 0 | -20 / +40 | 0 – 60 | -25 / 0 | -10 / +15 | 0 – 25 | e.g. 0 – 60 mbar |
| | | -40 / +20 | | | -15 / +10 | | |
| | -100 / 0 | -40 / +60 | 0 – 100 | -40 / 0 | -15 / +25 | 0 – 40 | |
| | | -60 / +40 | | | -25 / +15 | | |
| | -160 / 0 | -60 / +100 | 0 – 160 | -60 / 0 | -20 / +40 | 0 – 60 | |
| | | -100 / +60 | | | -40 / +20 | | |
| -250 / 0 | -100 / +150 | 0 – 250 | -100 / 0 | -40 / +60 | 0 – 100 | | |
| | -150 / +100 | | | -60 / +40 | | | |
| -400 / 0 | -150 / +250 | 0 – 400 | -160 / 0 | -60 / +100 | 0 – 160 | | |
| | -250 / +150 | | | -100 / +60 | | | |
| -600 / 0 | -200 / +400 | 0 – 600 | -250 / 0 | -100 / +150 | 0 – 250 | | |
| | -400 / +200 | | | -150 / +100 | | | |
| Process connection | standard thread | G ¼B | | | G ¼B | | |
| | options | ¼" NPT | | | ¼" NPT | | |
| | | M12x1.5 | | | M12x1.5 | | |
| | | G ⅜B | | | G ⅜B | | |
| | | ⅜" NPT | | | ⅜" NPT | | |
| | M10x1 | | | M10x1 | | | |
| Options | see page 4 | | | | | | |

Example

KPChg 63 – 1, 0 – 60 mbar, G ¼B

Ordering Information, Further Options

| Basic Model | Capsule Gauge for Low Pressure with Crimped-on Ring Case | | KPChg | | | | | | |
|-------------------------------|--|--|-------------------------------|------|-------------|------------|------|---------------|--|
| Model code | | | see page 3 | | | | | | |
| Options | red mark | on the dial | | | | | | | |
| | plastic clip | red or green, external at the crimped-on ring | | | | | | | |
| | special adjustment | | | | | | | | |
| | case polished | | | | | | | | |
| | silicone-free version | | | | | | | | |
| | restrictor screw in the pressure inlet port, material: like process connection brass or stainless steel | orifice Ø 0.3 mm (0.01") | | | | | | | |
| | overrange protection (üs) and/or vacuum protection (us) ¹⁾ | for types – 1 (copper alloy) <table border="1"> <tr> <td>3-fold üs²⁾ or us</td> <td>from</td> <td>0 – 25 mbar</td> </tr> <tr> <td>10-fold üs</td> <td>from</td> <td>–100 / 0 mbar</td> </tr> </table> combination 10-fold üs and 10-fold us only for compound ranges from measuring span 100 mbar | 3-fold üs ²⁾ or us | from | 0 – 25 mbar | 10-fold üs | from | –100 / 0 mbar | |
| 3-fold üs ²⁾ or us | from | 0 – 25 mbar | | | | | | | |
| 10-fold üs | from | –100 / 0 mbar | | | | | | | |
| | | for types – 3 (stainless steel) <table border="1"> <tr> <td>3-fold üs²⁾ or us</td> <td>from</td> <td>0 – 25 mbar</td> </tr> <tr> <td>10-fold üs</td> <td>from</td> <td>–100 / 0 mbar</td> </tr> </table> combination 10-fold üs and 3-fold us only for compound ranges from measuring span 40 mbar | 3-fold üs ²⁾ or us | from | 0 – 25 mbar | 10-fold üs | from | –100 / 0 mbar | |
| 3-fold üs ²⁾ or us | from | 0 – 25 mbar | | | | | | | |
| 10-fold üs | from | –100 / 0 mbar | | | | | | | |
| | instrument tag | stainless steel plate 12x55 mm (0.47x2.17"), wire mounting sticker on the case coverage | | | | | | | |

Special Versions: Please describe your requirements in cleartext!

¹⁾ max. –1000 mbar

²⁾ only for unfilled devices