

Capsule Gauges for Low Pressure

Bayonet ring case stainless steel

KPCh 63
KPChG 63

Standard Versions

Information on general and metrological features (e.g. load limits / temperature resistance) and standard pressure ranges / scale divisions can be found in model overview 6000.

Accuracy (DIN EN 837-3)
Class 1.6

Case
With bayonet ring, stainless steel 304 (1.4301)

Degree of Protection (DIN EN 60529 / IEC 60529)
IP44 for model KPCh with bottom connection
IP65 for model KPChG

Case Ventilation
Model KPChG case ventilation closable
ventilation required for internal pressure compensation

Case Filling
Model KPChG glycerin

Nominal Case Size
63 mm (2½")

Wetted Parts

Type – 1	connection	brass
	diaphragm capsule	CuBe alloy
	O-ring sealing	NBR
Type – 3	connection	stainless steel 316L (1.4404)
	diaphragm capsule	stainless steel 316L (1.4404)
	O-ring sealing	FKM

Case Configuration

Connection	screwed
Position of the connection	- bottom connection - centre back connection (rm)
Mounting device - without	- back flange for surface mounting (Rh) - front flange for panel mounting (Fr)

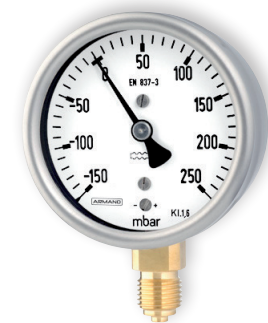
Pressure Ranges (DIN EN 837-3)

Model KPCh	0 – 25 mbar to 0 – 600 mbar (0 – 10 inH ₂ O to 0 – 250 inH ₂ O)
Model KPChG	0 – 100 mbar to 0 – 600 mbar (0 – 40 inH ₂ O to 0 – 250 inH ₂ O)

Process Connection
G ¼ B (¼" BSP)

Window

Model KPCh	instrument glass for type – 1 laminated safety glass for type – 3
	special version for case configuration Fr polycarbonate (with punched hole for zero adjustment)
Model KPChG	polycarbonate (with punched hole for zero adjustment)



Movement
Brass / German silver for type – 1
Stainless steel for type – 3

Dial
Aluminum white, scale black

Pointer
Aluminum black

Zero Adjustment
On the front side

Ordering Information, Standard Pressure Ranges, Options

See pages 3 and 4

Further Options

- Position of connection radial at 3 o'clock, 9 o'clock, 12 o'clock or other than vertical installation (90°) for unfilled models

Special Versions Upon Request

- Other process connections
- Other pressure ranges and / or special scales, e.g. dual scale mbar / kPa, coloured fields or ranges, dial inscriptions, negative scale
- Case parts 316L (1.4404)
- Increased degree of protection, e.g. IP65
- Wetted parts free of grease and oil for type – 3
- Oxygen version for type – 3 (without case filling)
- Version for higher medium temperatures
- Other position of connection
- Certificates and approvals, e.g. GOST (see also website)

Accessories

See catalogue heading 11

www.armano-messtechnik.com

ARMANO

ARMANO Messtechnik GmbH

Location Beierfeld
Am Gewerbepark 9 • 08344 Grünhain-Beierfeld
Tel.: +49 3774 58 – 0 • Fax: +49 3774 58 – 545
mail@armano-beierfeld.com

Location Wesel
Manometerstraße 5 • 46487 Wesel-Ginderich
Tel.: +49 2803 9130 – 0 • Fax: +49 2803 1035
mail@armano-wesel.com

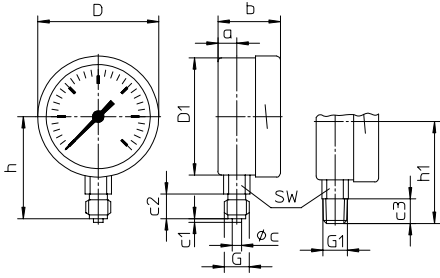
6211
05/23

Case Configurations, Code Letters, Dimensional Data and Weight, Case Ventilation

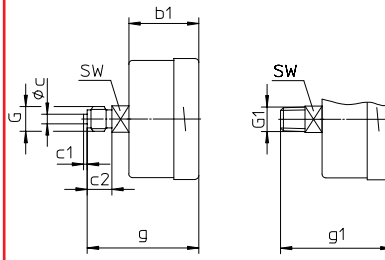
Bottom Connection Centre Back Connection

without mounting device

without code letters

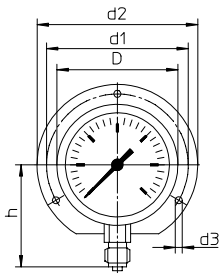


code letters rm

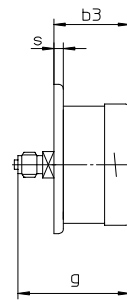


with back flange for surface mounting

code letters Rh



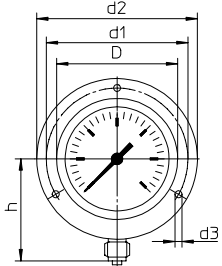
code letters rmRh



(available upon request, but not recommended according to DIN EN 837-3)

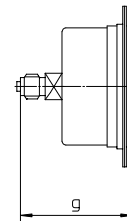
with front flange for panel mounting

code letters Fr



(available upon request, but not recommended according to DIN EN 837-3)

code letters rmFr



front flange with slotted holes, separate cover ring, recommended panel cut out: $\varnothing 67 \pm 0.3 \text{ mm}$ ($2.64 \pm 0.01''$)

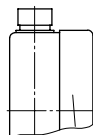
Dimensional Data (mm / inch) and Weight (kg / lb)

NCS		a	a1	b	b1	b2	b3	c	c1	c2	c3	D	D1	D2	d1	d2	d3	G	G1
63	KPCh	10 0.39	13 0.51	38 1.5	37 1.46	41 1.61	40 1.57	5 0.2	2 0.08	13 0.51	13 0.51	64 2.52	62 2.44	66 2.6	75 2.95	85 3.35	3.6 0.14	G 1/4 B M 12x1.5	1/4" NPT
63	KPChG	10 0.39	13 0.51	47 1.85	37 1.46	50 1.97	40 1.57	5 0.2	2 0.08	13 0.51	13 0.51	64 2.52	62 2.44	66 2.6	75 2.95	85 3.35	3.6 0.14	G 1/4 B M 12x1.5	1/4" NPT
63	10-fold üs KPCh / KPChG	10 0.39	13 0.51	47 1.85	47 1.85	50 1.97	50 1.97	5 0.2	2 0.08	13 0.51	13 0.51	64 2.52	62 2.44	66 2.6	75 2.95	85 3.35	3.6 0.14	G 1/4 B M 12x1.5	1/4" NPT

g	g1	h ¹⁾	h1 ¹⁾	s	s2	s3	SW	approx. weight ¹⁾
60 2.36	60 2.36	54 2.13	54 2.13	5 0.2	2 0.08	5.5 0.22	14 0.55	0.21 0.46
60 2.36	60 2.36	54 2.13	54 2.13	5 0.2	2 0.08	5.5 0.22	14 0.55	0.26 0.57
70 2.76	70 2.76	54 2.13	54 2.13	5 0.2	2 0.08	5.5 0.22	14 0.55	0.21 / 0.26 0.46 / 0.55

Case Ventilation

Model KPChG
case ventilation no. 26
(reclosable, IP65)



¹⁾ data for versions without mounting device

Ordering Information, Further Options

These options are to be ordered in written form. Please contact us to ensure compatibility when combining options.

Red mark	on the dial		
Stationary red pointer	on the dial		
	adjustable with removable ring		
	adjusting mechanism stainless steel		
	with window made of polycarbonate, screwed		
	adjustable externally	removable key	non-removable key
Max. drag indicator	adjusting mechanism stainless steel		
measuring spans from 160 mbar	with window made of polycarbonate, screwed		
clockwise pointer movement; for vibration-free application	adjustable externally	removable key	non-removable key
Special adjustment			
Case polished			
Bayonet ring polished			
Silicone-free version			
Restrictor screw	orifice Ø 0.3 mm (0.01")		
in the pressure inlet port			
material: brass or stainless steel			
Overrange protection (üs) and / or	for type – 1 (copper alloy)	3-fold üs ²⁾ or us	
		10-fold üs	from 0 – 25 mbar
vacuum protection (us)¹⁾	combination 10-fold üs and 10-fold us only for compound ranges from measuring span 100 mbar	10-fold us	from –100 / 0 mbar
	for type – 3 (stainless steel)	3-fold üs ²⁾ or us	
		10-fold üs	from 0 – 25 mbar
		10-fold us	from –100 / 0 mbar
	combination 10-fold üs and 3-fold us only for compound ranges from measuring span 40 mbar		
Instrument tag	stainless steel plate 12 x 55 mm (0.47 x 2.17"), wire mounting sticker on the case		

Special Versions: Please describe your requirements in cleartext!

¹⁾ max. –1 000 mbar

²⁾ only for unfilled devices