

Bourdon Tube Pressure Gauges

Bayonet ring case stainless steel
DW-Line (Double Weld)

RCh / RChG
– 3vDW

DW-Line

In order to meet special requirements even more effectively, especially in the food / bio / pharmaceutical industries, we have developed the DW-Line pressure gauges for chemical seal mounting. DW – Double Weld are Bourdon tube pressure gauges, which are welded to the chemical seal. The case of the pressure gauge is welded to the circular connecting piece (DW1) and the circular connecting piece is welded to the chemical seal (DW2). For this purpose, the circular connecting piece has a d8x5 process connection and the chemical seal has a corresponding bore.

Standard Versions

Information on general and metrological features (e.g. load limits/temperature resistance) and standard pressure ranges/scale divisions can be found in model overview 1000.

Accuracy (DIN EN 837-1)
Class 1.0

Case
With bayonet ring, stainless steel 304 (1.4301)

Degree of Protection (DIN EN 60529 / IEC 60529)
IP54
IP65 for model RChG 100 and
model RChG 160 (measuring span ≥ 2.5 bar (30 psi))

Blow-out Device
Model RCh blow-out plug in the back of the case, $\varnothing 1"$ (25 mm)
Model RChG 100 blow-out plug in the back of the case, $\varnothing 40$ mm (1.57")
Model RChG 160 blow-out device at the top of the case coverage

Case Ventilation
Model RChG 100 without ventilation, but with internal pressure compensation via pressure equalising membrane
Model RChG 160 via blow-out device

Case Filling
Model RChG glycerin

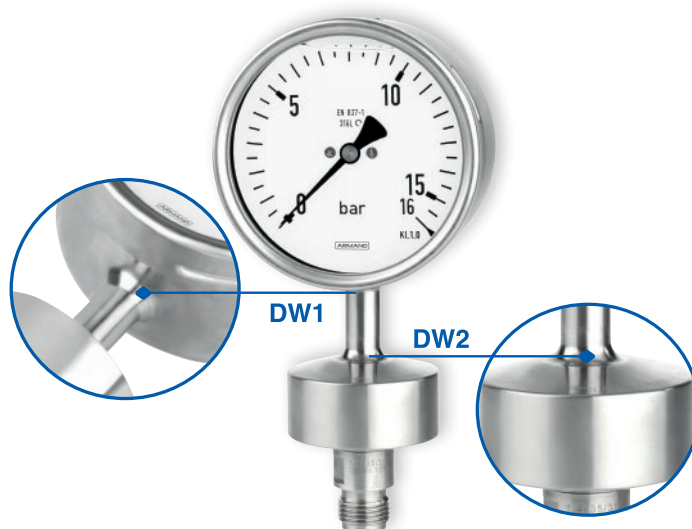
Nominal Case Size
100, 160 mm (4, 6")

Wetted Parts
Connection stainless steel 316L (1.4404)
Bourdon tube stainless steel 316L (1.4404)
gas-shielded arc welding
 ≤ 40 bar (600 psi) c-form
 ≥ 60 bar (800 psi) helical form

Case Configuration
Connection welded
Position of the connection
- bottom connection
- lower back connection (r)

Pressure Ranges (DIN EN 837-1)
0 – 0.6 bar to 0 – 600 bar (0 – 10 psi to 0 – 10 000 psi)

Process Connection
Welded connection piece d8x5 for welding to the chemical seal



Window
Laminated safety glass

Movement
Stainless steel

Dial
Aluminum white, scale black

Pointer
Aluminum black

Safety Category According to DIN EN 837-1
S1 pressure gauges with blow-out device

Ordering Information, Standard Pressure Ranges, Options

See pages 3 and 4

Further Options

- Position of connection radial at 3 o'clock, 9 o'clock, 12 o'clock or other than vertical installation (90°) for unfilled models

Special Versions Upon Request

- Other pressure ranges and / or special scales, e.g. dual scale bar / psi, coloured fields or ranges, dial inscriptions, negative scale
- Stationary red pointer with window made of polycarbonate or laminated safety glass
- Min. / max. drag indicator
- Case parts 316L (1.4404)
- Increased degree of protection, e.g. IP65 without case filling
- Other case fillings
- Model RChG for ambient temperatures down to -40 °C (-40 °F)
- Other position of connection
- Certificates and approvals, e.g. GOST (see also website)

Accessory

Chemical seals see catalogue heading 7
Electrical see data sheet 1201.90
see catalogue heading 9.1

www.armano-messtechnik.com

ARMANO

ARMANO Messtechnik GmbH

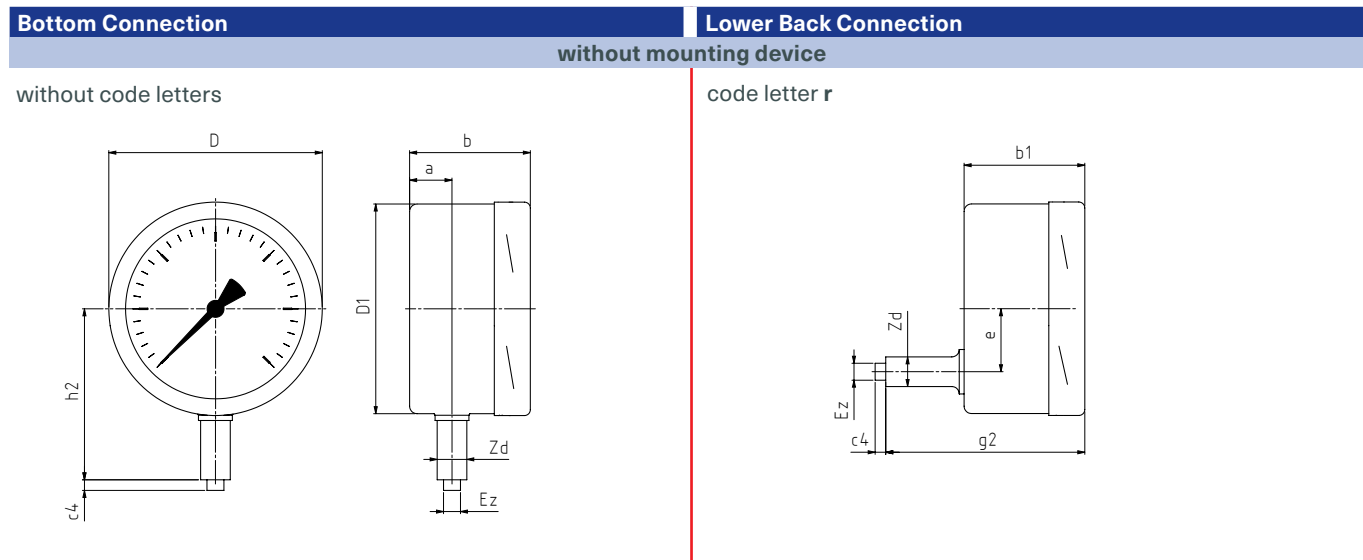
Location Beierfeld
Am Gewerbeplatz 9 • 08344 Grünhain-Beierfeld
Tel.: +49 3774 58 – 0 • Fax: +49 3774 58 – 545
mail@armano-beierfeld.com

Location Wesel
Manometerstraße 5 • 46487 Wesel-Ginderich
Tel.: +49 2803 9130 – 0 • Fax: +49 2803 1035
mail@armano-wesel.com

1201.7

07/22

Case Configurations, Code Letters, Dimensional Data and Weight, Blow-out Device

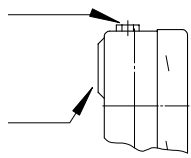


Dimensional Data (mm / inch) and Weight (kg / lb)													
NCS	a	b	b1	c4	D	D1	e	Ez	g2	h2 ±1	Zd +0.5	approx. weight	
												RCh	RChG
100	20	55	55	5	101	99	30	8	92	79	14	0.45	0.80
4"	0.79	2.17	2.17	0.2	3.98	3.9	1.18	0.31	3.62	3.11	0.55	0.99	1.76
160	20	55	55	5	161	159	30	8	92	109	14	0.90	1.75
6"	0.79	2.17	2.17	0.2	6.34	6.26	1.18	0.31	3.62	4.29	0.55	1.98	3.86

Blow-out Device

Blow-out device for model RChG 160
 pressure range ≤ 1.6 bar blow-out device no. 5
 ≥ 2.5 bar blow-out device no. 3

Blow-out plug Ø 1" (25 mm) for models RCh 100, 160
 Ø 40 mm (1.57") for model RChG 100
 with pressure equalising membrane



Ordering Information, Further Options

These options are to be ordered in written form. Please contact us to ensure compatibility when combining options.

Adjustable pointer	with aluminum mechanism
Red mark	on the dial
Plastic clip	red or green, external at the bayonet ring
Stationary red pointer	on the dial adjustable with removable ring adjusting mechanism stainless steel with window made of acrylic glass, screwed
	adjustable externally
Special adjustment	reference points = odd values, e.g. 100 KN = 8.735 bar
Window	acrylic glass (PMMA)
	polycarbonate (PC)
Case polished	
Bayonet ring polished	
Silicone-free version	
Instrument tag	stainless steel plate 12 x 55 mm (0.47 x 2.17"), wire mounting
	sticker on the case coverage

Special Versions: Please describe your requirements in cleartext!