

Checklist Pressure Measuring Instruments with Chemical Seal



Heading 7

Inquiry / Project / Order No.	Name / Address / Phone / E-Mail	Date
Application (short description)		Quantity
Pressure Measuring Instrument/Electrical Accessory, if Applicable (ordering information)		

Please note: A mounting device for the measuring instrument is required for chemical seal mountings with capillary line:
 gauge holder bracket with distance "D" 60 mm (2.36") 100 mm (4") 160 mm (6") aluminum black stainless steel
 front flange for panel mounting
 back flange for surface mounting

Chemical Seal

<input type="checkbox"/> Diaphragm seal (MDM)	<input type="checkbox"/> In-line seal (RDM)	<input type="checkbox"/> Capsule seal (TDM)
Type	
Standard	<input type="checkbox"/> DIN	<input type="checkbox"/> ASME <input type="checkbox"/> JIS
Installation to Ex-Zone 0	<input type="checkbox"/> yes (with Adapt FS acc. to data sheet 11001) <input type="checkbox"/> no	
Process connection DN/NPS PN/Class	
For RDM	suitable for internal tube diameter mm	
For MDM with extension tube	extension tube length mm	
Medium	<input type="checkbox"/> gaseous	<input type="checkbox"/> liquid <input type="checkbox"/> viscous <input type="checkbox"/> abrasive
Material wetted parts	<input type="checkbox"/> standard, acc. to data sheet <input type="checkbox"/> special material:	
Max. operating pressure	static bar / dynamic from to bar / frequency Hz	
Can vacuum occur?	<input type="checkbox"/> yes, smallest absolute pressure mbar at a temperature of °C	
	<input type="checkbox"/> no	
Operating temperature (t_A)	medium °C steady, or min. °C/max. °C	
	dial inscription t _A = °C (will be calibrated)	
Cleaning temperature (t_r)	at the chemical seal max. °C / cleaning duration h	
Ambient temperature (t_{UD})	at the pressure measuring instrument °C steady, or min. °C/max. °C	
Ambient temperature (t_{UF})	at the capillary line °C steady, or min. °C/max. °C	
Outdoor use	<input type="checkbox"/> yes <input type="checkbox"/> no	
Filling liquid	<input type="checkbox"/> selection according to abovementioned temperature specifications	
	further requirements: <input type="checkbox"/> for oxygen <input type="checkbox"/> for chlorine <input type="checkbox"/> silicone-free	
	<input type="checkbox"/> food compatible <input type="checkbox"/> FDA approved	
	others:	
Certificate	<input type="checkbox"/> 3.1 acc. to DIN EN 10 204 for wetted parts <input type="checkbox"/> no others:	
Accessory	e.g. process connection pieces, flushing ring:	
Mounting	see page 2	

Checklist Pressure Measuring Instruments with Chemical Seal

Mounting

according to drawing no.:

Ref. drawing 16 – 21

capillary line length L = m H = m

with PE-cover spiral protection hose other specialty:

Ref. drawing 1 – 15

cooling element yes, KEIRv up to +300 °C (+572 °F), length 100 mm (4") specialty

Drawings for differential pressure gauges for level and flow measurement see additional form.

Direct Mounting Diaphragm Seals (MDM)

Drawing 1



bottom connection

Drawing 2



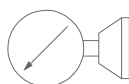
connection 9 o'clock

Drawing 3



connection 12 o'clock

Drawing 4



connection 3 o'clock

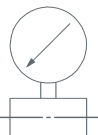
Drawing 5



back connection

Direct Mounting In-line Seals (RDM)

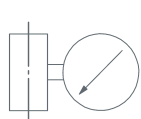
Drawing 6



Drawing 7



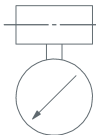
Drawing 8



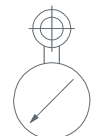
Drawing 9



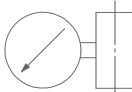
Drawing 10



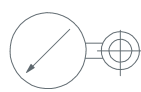
Drawing 11



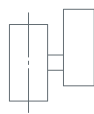
Drawing 12



Drawing 13



Drawing 14

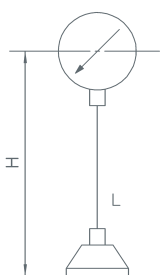


Drawing 15

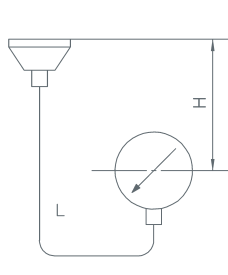


MDM Mounting with Capillary Line

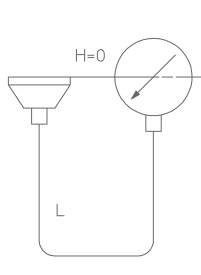
Drawing 16



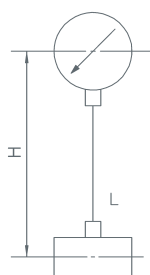
Drawing 17



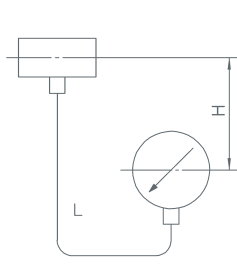
Drawing 18



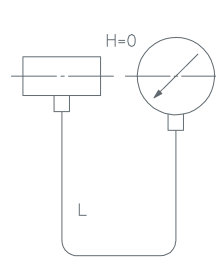
Drawing 19



Drawing 20



Drawing 21



RDM Mounting with Capillary Line

In the drawings 16 to 21 for mounting with capillary line, only measuring instruments with bottom connection at 6 o'clock are depicted. However, if you require any other connection position at the measuring instrument, please combine the drawings!

Example: pressure gauge with **back** connection, mounted 3 m (9.84') **above** an in-line seal, capillary line length 5 m (16.4')

➔ **Description:** mounting according to drawing no. 15, 19, capillary line length L = 5 m, H = 3 m

Important Information Concerning the Mounting with Capillary Line

➔ If vacuum occurs or might occur, the pressure measuring instrument needs to be mounted at least 40 cm (15.75") below the chemical seal (drawing 17 for MDM, drawing 20 for RDM).

➔ The measuring instrument requires a mounting device if it is mounted with a capillary line (cf. top of page 1).

Specifics:

instruments are being autoclaved at +130 °C (+266 °F) at the customer's site

required control volume for mounting of external brands:

others:

.....